



pocket door systems

Price List

April 2025





Price List

April 2025

Terms

Nett Monthly Account for approved customers only. Otherwise payment required with order.

VAT

VAT is not included in these prices and will be shown as an extra on invoices.

Carriage

All carriage is charged at cost. Split deliveries at customer's request will be charged as if separate orders.

Carriage Charges

Carriage is charged in addition to the part unit prices enclosed. Carriage as standard is by tranship courier which can take up to 2 days from works. Direct-to-site transport can be arranged and will be charged accordingly.

Charges to UK Mainland

Carriage charged at cost although the exact cost depends on consignment size and weight.

Please contact the sales office for an exact carriage quote.

Direct deliveries

Guaranteed next day, timed and Saturday deliveries are charged extra. Contact Sales Office for details.

On request, we are very happy to arrange for deliveries direct to site or a different address to the invoicing address. Experience has shown us however, that with such shipments there is a high incidence of disputed receipts and consignments being lost, mislaid or damaged and delays over settlement of invoices.

By specifying an alternative delivery address, Royde & Tucker Ltd have no knowledge of what personnel, procedures or conditions exist at that site and once

the carriers receipt has been signed (whoever by), the purchaser has fully abrogated our responsibility for any further liability. When an item is delivered, risk of damage to, or loss of the item passes to you.

Therefore:

A charge of £15.00 in addition to any other carriage charge due per consignment will apply. We will not consider any claims for damage, failure to deliver or lost goods once our carrier has obtained a signature for receipt.

IT IS THE RESPONSIBILITY OF THE CUSTOMER TO ENSURE THAT ANY DAMAGE TO DELIVERIES IS CHECKED AND THAT THE DELIVERY IS SIGNED FOR AS DAMAGED.

Title

Portman is a trademark of Royde & Tucker Ltd. Royde & Tucker Ltd retain title to all goods until payment is made. In the event of the buyer's insolvency, Royde & Tucker Ltd reserve the right of lien of the goods already in the buyer's possession, (although such goods or part thereof may have been paid for), to the value of the unpaid account. All orders are accepted subject to our Standard Conditions of Sale, see back page.

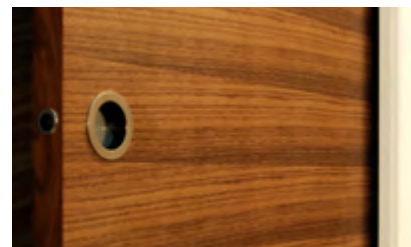
Returns

It is the purchaser's responsibility to ensure the correct specification of products, as there is a handling charge on authorised exchanges or returns. If for any reason you wish to return goods to us, contact the Sales Office first, so that the return can be authorised. Unauthorised returns will be subject to a minimum 50% re-stocking charge.

Proof of Delivery

Only available for 3 months from date of delivery.

Standard kits



Standard kits for single doors

Part code	Description	£
P7001 SD	PORTMAN STANDARD SINGLE DOOR KIT, for doors 626-926mm up to 2100mm high and 44mm thick, including timber jambs and brush seals.	347.00
P7001 SDG	As above but for frameless glass doors.	522.00
P7001 ID	PORTMAN SINGLE INTERMEDIATE DOOR KIT, for doors 926-1300mm up to 2100mm high and 44mm thick, including timber jambs and brush seals.	540.00
P7001 IDG	As above but for frameless glass doors.	698.00
P7001 WD	PORTMAN SINGLE WIDE DOOR KIT, for doors 1300-1500mm up to 2100mm high and 44mm thick, including timber jambs and brush seals.	608.00
P7001 WDG	As above but for frameless glass doors.	744.00
P7001 TD	PORTMAN SINGLE TALL DOOR KIT, for doors 626-926mm up to 2700mm high and 44mm thick, including timber jambs and brush seals.	468.00
P7001 TDG	As above but for frameless glass doors.	608.00
P7001 ITD	PORTMAN SINGLE INTERMEDIATE TALL DOOR KIT, for doors 926-1300mm up to 2700mm high and 44mm thick, including timber jambs and brush seals.	655.00
P7001 ITDG	As above but for frameless glass doors.	818.00
P7001 WTD	PORTMAN SINGLE WIDE TALL DOOR KIT, for doors 1300-1500mm up to 2700mm high and 44mm thick, including timber jambs and brush seals.	737.00
P7001 WTDG	As above but for frameless glass doors.	919.00

Standard kits for double doors

Part code	Description	£
P7001 DD	PORTMAN STANDARD DOUBLE DOOR KIT, for doors 626-926mm up to 2100mm high and 44mm thick, including timber jambs and brush seals.	646.00
P7001 DDG	As above but for frameless glass doors.	928.00
P7001 IDD	PORTMAN INTERMEDIATE DOUBLE DOOR KIT, for doors 927-1300mm up to 2100mm high and 44mm thick, including timber jambs and brush seals.	1007.00
P7001 IDDG	As above but for frameless glass doors.	1206.00
P7001 WDD	PORTMAN WIDE DOUBLE DOOR KIT, for doors 1301-1500mm up to 2100mm high and 44mm thick, including timber jambs and brush seals.	1107.00
P7001 WDDG	As above but for frameless glass doors.	1355.00
P7001 TDD	PORTMAN TALL DOUBLE DOORS KIT, for doors 626-926mm up to 2700mm high and 44mm thick, including timber jambs and brush seals.	774.00
P7001 TDDG	As above but for frameless glass doors.	1086.00
P7001 ITDD	PORTMAN DOUBLE INTERMEDIATE TALL DOOR KIT, for doors 926-1300mm up to 2700mm high and 44mm thick, including timber jambs and brush seals.	1168.00
P7001 ITDDG	As above but for frameless glass doors.	1415.00
P7001 WTDD	PORTMAN WIDE TALL DOUBLE DOOR KIT, for doors 1301-1500mm up to 2700mm high and 44mm thick, including timber jambs and brush seals.	1317.00
P7001 WT-DDG	As above but for frameless glass doors.	1672.00
P755	Additional Portman kit to link 2 door leaves for simultaneous operation, maximum individual door leaf width 926mm.	104.00
P757	Additional Portman kit to link 2 door leaves for simultaneous operation, maximum individual door leaf width 927-1300mm.	108.00

Architrave free kits



Architrave free kits for single doors

Part code	Description	£
P7300 SDE	PORTMAN SINGLE STANDARD A'FREE DOOR KIT for doors 626-926mm up to 2100mm high and 44mm thick.	446.00
P7300 SDEG	PORTMAN SINGLE STANDARD A'FREE DOOR KIT complete with PG926 Glass door clamps.	556.00
P7300 IDE	PORTMAN SINGLE INTERMEDIATE A'FREE DOOR KIT for doors 926-1300mm up to 2100mm high and 44mm thick.	555.00
P7300 IDEG	PORTMAN SINGLE INTERMEDIATE A'FREE DOOR KIT complete with PG1500 Glass door clamps.	683.00
P7300 WDE	PORTMAN SINGLE WIDE A'FREE DOOR KIT for doors 1300-1500mm up to 2100mm high and 44mm thick.	624.00
P7300 WDEG	PORTMAN SINGLE WIDE A'FREE DOOR KIT complete with P1500 Glass door clamps.	745.00
P7300 TDE	PORTMAN TALL SINGLE STANDARD A'FREE DOOR KIT for doors 626-926mm up to 2700mm high and 44mm thick.	542.00
P7300 TDEG	PORTMAN TALL SINGLE STANDARD A'FREE DOOR KIT complete with PG926 Glass door clamps.	670.00
P7300 ITDE	PORTMAN TALL SINGLE INTERMEDIATE A'FREE DOOR KIT for doors 926-1300mm up to 2700mm high and 44mm thick.	750.00
P7300 ITDEG	PORTMAN TALL SINGLE INTERMEDIATE A'FREE DOOR KIT complete with PG1500 Glass door clamps.	877.00
P7300 WTDE	PORTMAN TALL SINGLE WIDE A'FREE DOOR KIT for doors 1300-1500mm up to 2700mm high and 44mm thick.	834.00
P7300 WTDEG	PORTMAN TALL SINGLE WIDE A'FREE DOOR KIT complete with P1500 Glass door clamps.	954.00

Architrave free kits for double doors

Part code	Description	£
P7300 DDE	PORTMAN DOUBLE STANDARD A'FREE DOOR KIT for doors 626-926mm up to 2100mm high and 44mm thick.	681.00
P7300 DDEG	PORTMAN DOUBLE STANDARD A'FREE DOOR KIT complete with PG926 Glass door clamps.	931.00
P7300 IDDE	PORTMAN DOUBLE INTERMEDIATE A'FREE DOOR KIT for doors 926-1300mm up to 2100mm high and 44mm thick.	945.00
P7300 IDDEG	PORTMAN DOUBLE INTERMEDIATE A'FREE DOOR KIT complete with PG1500 Glass door clamps.	1196.00
P7300 WDDE	PORTMAN DOUBLE WIDE A'FREE DOOR KIT for doors 1300-1500mm up to 2100mm high and 44mm thick.	1041.00
P7300 WDDEG	PORTMAN DOUBLE WIDE A'FREE DOOR KIT complete with P1500 Glass door clamps.	1295.00
P7300 TDDE	PORTMAN TALL DOUBLE STANDARD A'FREE DOOR KIT for doors 626-926mm up to 2700mm high and 44mm thick.	834.00
P7300 TDDEG	PORTMAN TALL DOUBLE STANDARD A'FREE DOOR KIT complete with PG926 Glass door clamps.	1120.00
P7300 ITDDE	PORTMAN TALL DOUBLE INTERMEDIATE A'FREE DOOR KIT for doors 926-1300mm up to 2700mm high and 44mm thick.	1181.00
P7300 ITDDEG	PORTMAN TALL DOUBLE INTERMEDIATE A'FREE DOOR KIT complete with PG1500 Glass door clamps.	1443.00
P7300 WTDDE	PORTMAN TALL DOUBLE WIDE A'FREE DOOR KIT for doors 1300-1500mm up to 2700mm high and 44mm thick.	1320.00
P7300 WTD-DEG	PORTMAN TALL DOUBLE WIDE A'FREE DOOR KIT complete with P1500 Glass door clamps.	1573.00

FD30



FD30 kits for single doors (BS 476 pt22) - IFC FDA PAR/10790/01 Rev D

Part code	Description	£
PFD30 SD	PORTMAN SINGLE STANDARD FD30 DOOR KIT for doors 626-926mm wide, up to 2100mm high and 44mm thick.	608.00
PFD30 SD SG	PORTMAN SINGLE STANDARD FD30 DOOR KIT, timber framed/shadow gap.	636.00
PFD30 ID	PORTMAN SINGLE INTERMEDIATE FD30 DOOR KIT for doors 927-1250mm wide, up to 2100mm high and 44mm thick.	804.00
PFD30 ID SG	PORTMAN SINGLE INTERMEDIATE FD30 DOOR KIT, timber framed/shadow gap.	847.00
PFD30 WD	PORTMAN SINGLE WIDE FD30 DOOR KIT for doors 1251-1500mm wide, up to 2100mm high and 44mm thick.	855.00
PFD30 WD SG	PORTMAN SINGLE WIDE FD30 DOOR KIT, timber framed/shadow gap.	887.00
PFD30 TD	PORTMAN SINGLE TALL FD30 DOOR KIT for doors 626-926mm wide, up to 2700mm high and 44mm thick.	698.00
PFD30 TD SG	PORTMAN SINGLE TALL FD30 DOOR KIT, timber framed/shadow gap.	805.00
PFD30 ITD	PORTMAN SINGLE INTERMEDIATE TALL FD30 DOOR KIT for doors 927-1250mm wide, up to 2700mm high and 44mm thick.	928.00
PFD30 ITD SG	PORTMAN SINGLE INTERMEDIATE TALL FD30 DOOR KIT, timber framed/shadow gap.	996.00
PFD30 WTD	PORTMAN SINGLE WIDE TALL FD30 DOOR KIT for doors 1251-1500mm wide, up to 2700mm high and 44mm thick.	986.00
PFD30 WTD SG	PORTMAN SINGLE WIDE TALL FD30 DOOR KIT, timber framed/shadow gap.	1053.00

FD30 kits for double doors

Part code	Description	£
PFD30 DD	PORTMAN DOUBLE STANDARD FD30 DOOR KIT for doors 626-926mm wide, up to 2100mm high and 44mm thick.	901.00
PFD30 DD SG	PORTMAN DOUBLE STANDARD FD30 DOOR KIT, timber framed/shadow gap.	1069.00
PFD30 IDD	PORTMAN DOUBLE INTERMEDIATE FD30 DOOR KIT for doors 927-1210mm wide, up to 2100mm high and 44mm thick.	1217.00
PFD30 IDD SG	PORTMAN DOUBLE INTERMEDIATE FD30 DOOR KIT, timber framed/shadow gap.	1284.00
PFD30 WDD	PORTMAN DOUBLE WIDE FD30 DOOR KIT for doors 1210-1500mm wide, up to 2100mm high and 44mm thick.	1319.00
PFD30 TDD	PORTMAN DOUBLE TALL FD30 DOOR KIT for doors 626-926mm wide, up to 2700mm high and 44mm thick.	1067.00
PFD30 TDD SG	PORTMAN DOUBLE TALL FD30 DOOR KIT, timber framed/shadow gap.	1176.00
PFD30 ITDD*	PORTMAN DOUBLE INTERMEDIATE TALL FD30 DOOR KIT for doors 927-1210mm wide, up to 2700mm high and 44mm thick.	1419.00
PFD30 WTDD*	PORTMAN DOUBLE TALL FD30 DOOR KIT, for doors 1210-1500mm wide, up to 2100-2700mm high and 44mm thick.	1553.00

* Please check with the sales office as Fire Certification relates to overall door surface area

Portman Power Operated Kits

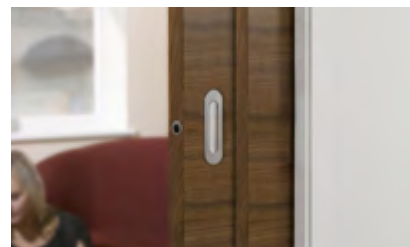


Nb. Dimensions below are based on the clear opening (walk through) rather than door leaf size

Part code	Description	£
SINGLE DOOR KITS		
PWSS200SD	PORTMAN power assisted operator door kit to suit 737 to 861mm wide (clear width opening), up to 2100mm high (clear height opening) and 44mm thick. Finished wall thickness 125mm. Max door leaf weight 80kg. Includes timber jamb set.	2278.00
PWSS200ID	PORTMAN power assisted door operator kit to suit 862 to 986mm wide (clear width opening), up to 2100mm high (clear height opening) and 44mm thick. Finished wall thickness 125mm. Max door leaf weight 80kg. Includes timber jamb set	2326.00
PWSS200WD	PORTMAN power assisted operator door kit to suit 987 to 1111mm wide (clear width opening), up to 2100mm high (clear height opening) and 44mm thick. Finished wall thickness 125mm. Max door leaf weight 80kg. Includes timber jamb set.	2407.00
PWSS200STD	PORTMAN power assisted operator door kit to suit 737 to 861mm wide (clear width opening), up to 2700mm high (clear height opening) and 44mm thick. Finished wall thickness 125mm. Max door leaf weight 80kg. Includes timber jamb set.	2326.00
PWSS200ITD	PORTMAN power assisted operator door kit to suit 862 to 986mm wide (clear width opening), up to 2700mm high (clear height opening) and 44mm thick. Finished wall thickness 125mm. Max door leaf weight 80kg. Includes timber jamb set.	2451.00
PWSS200WTD	PORTMAN power assisted operator door kit to suit 987 to 1111mm wide (clear width opening), up to 2700mm high (clear height opening) and 44mm thick. Finished wall thickness 125mm. Max door leaf weight 80kg. Includes timber jamb set.	2506.00

For double door kits please contact the sales office

Self-closer/telescopic kits



Self-closer kits for single doors

N.b All Self closer kits contain soft close. Minimum door leaf width for all is 755mm

Part code	Description	£
PC13F	SINGLE SOFT CLOSE DAMPER FOR DOORS 755mm TO 1500mm WIDE & UP TO 80KG	43.00
PC20-SD1	SINGLE DOOR SELF CLOSER FOR USE WITH PFD30 PORTMAN POCKET DOOR KITS COMPLETE WITH SOFT CLOSE DAMPER. SUITABLE FOR 30MIN FIRE RATED - LIGHT DUTY UP TO 40kg	101.00
PC20-SD2	SINGLE DOOR SELF CLOSER FOR USE WITH PFD30 PORTMAN POCKET DOOR KITS COMPLETE WITH SOFT CLOSE DAMPER. SUITABLE FOR 30MIN FIRE RATED - MEDIUM DUTY FROM 40 TO 80kg	124.00
PC20-SD3	SINGLE DOOR SELF CLOSER FOR USE WITH PFD30 PORTMAN POCKET DOOR KITS COMPLETE WITH SOFT CLOSE DAMPER. SUITABLE FOR 30MIN FIRE RATED - HEAVY DUTY FROM 80-120kg	139.00
PC21-FSD	SINGLE DOOR SELF CLOSER FOR USE WITH PORTMAN POCKET DOOR KITS, COMPLETE WITH SOFT CLOSE DAMPER AND 24Vdc ELECTROMAGNETIC HOLD OPEN - LIGHT DUTY UP TO 40kg	196.00
PC22-FSD	SINGLE DOOR SELF CLOSER FOR USE WITH PORTMAN POCKET DOOR KITS, COMPLETE WITH SOFT CLOSE DAMPER AND 24Vdc ELECTROMAGNETIC HOLD OPEN - MEDIUM DUTY FROM 40 TO 80kg	234.00
PC23-FSD	SINGLE DOOR SELF CLOSER FOR USE WITH PORTMAN POCKET DOOR KITS, COMPLETE WITH SOFT CLOSE DAMPER AND 24Vdc ELECTROMAGNETIC HOLD OPEN - HEAVY DUTY FROM 80 TO 120kg	247.00
PC24-FSD	SINGLE DOOR SELF CLOSER FOR USE WITH PORTMAN POCKET DOOR KITS, COMPLETE WITH SOFT CLOSE DAMPER AND 230Vac ELECTROMAGNETIC HOLD OPEN - LIGHT DUTY UP TO 40kg	143.00
PC25-FSD	SINGLE DOOR SELF CLOSER FOR USE WITH PORTMAN POCKET DOOR KITS, COMPLETE WITH SOFT CLOSE DAMPER AND 230Vac ELECTROMAGNETIC HOLD OPEN - MEDIUM DUTY FROM 40 TO 80kg	173.00
PC26-FSD	SINGLE DOOR SELF CLOSER FOR USE WITH PORTMAN POCKET DOOR KITS, COMPLETE WITH SOFT CLOSE DAMPER AND 230Vac ELECTROMAGNETIC HOLD OPEN - HEAVY DUTY FROM 80 TO 120kg	179.00

Self-closer kits for double doors

Part code	Description	£
PC20-DD1	DOUBLE DOOR SELF CLOSER FOR USE WITH PFD30 PORTMAN POCKET DOOR KITS COMPLETE WITH SOFT CLOSE DAMPER. SUITABLE FOR 30MIN FIRE RATED - LIGHT DUTY UP TO 40kg	193.00
PC20-DD2	DOUBLE DOOR SELF CLOSER FOR USE WITH PFD30 PORTMAN POCKET DOOR KITS COMPLETE WITH SOFT CLOSE DAMPER. SUITABLE FOR 30MIN FIRE RATED - MEDIUM DUTY FROM 40 TO 80kg	238.00
PC20-DD3	DOUBLE DOOR SELF CLOSER FOR USE WITH PFD30 PORTMAN POCKET DOOR KITS COMPLETE WITH SOFT CLOSE DAMPER. SUITABLE FOR 30MIN FIRE RATED - HEAVY DUTY FROM 80-120kg	262.00
PC21-FDD	DOUBLE DOOR SELF CLOSER FOR USE WITH PORTMAN POCKET DOOR KITS, COMPLETE WITH SOFT CLOSE DAMPER AND 24Vdc ELECTROMAGNETIC HOLD OPEN - LIGHT DUTY UP TO 40kg	388.00
PC22-FDD	DOUBLE DOOR SELF CLOSER FOR USE WITH PORTMAN POCKET DOOR KITS, COMPLETE WITH SOFT CLOSE DAMPER AND 24Vdc ELECTROMAGNETIC HOLD OPEN - MEDIUM DUTY FROM 40 TO 80kg	452.00
PC23-FDD	DOUBLE DOOR SELF CLOSER FOR USE WITH PORTMAN POCKET DOOR KITS, COMPLETE WITH SOFT CLOSE DAMPER AND 24Vdc ELECTROMAGNETIC HOLD OPEN - HEAVY DUTY FROM 80 TO 120kg	460.00
PC24-FDD	DOUBLE DOOR SELF CLOSER FOR USE WITH PORTMAN POCKET DOOR KITS, COMPLETE WITH SOFT CLOSE DAMPER AND 230Vac ELECTROMAGNETIC HOLD OPEN - LIGHT DUTY UP TO 40kg	260.00
PC25-FDD	DOUBLE DOOR SELF CLOSER FOR USE WITH PORTMAN POCKET DOOR KITS, COMPLETE WITH SOFT CLOSE DAMPER AND 230Vac ELECTROMAGNETIC HOLD OPEN - MEDIUM DUTY FROM 40 TO 80kg	344.00
PC26-FDD	DOUBLE DOOR SELF CLOSER FOR USE WITH PORTMAN POCKET DOOR KITS, COMPLETE WITH SOFT CLOSE DAMPER AND 230Vac ELECTROMAGNETIC HOLD OPEN - HEAVY DUTY FROM 80 TO 120kg	356.00

Telescopic kits

Part code	Description	£
P7401 SD	PORTMAN STANDARD TELESCOPIC DOORSET KIT, for 2no doors 626-926mm up to 2100mm high and 44mm thick. Inclusive of timber door linings, brush and silicon seals.	769.00
P7401 ID	PORTMAN INTERMEDIATE TELESCOPIC DOORSET KIT, for 2no doors 927-1300mm up to 2100mm high and 44mm thick. Inclusive of timber door linings, brush and silicon seals.	1059.00
P7401 TD	PORTMAN TALL TELESCOPIC DOORSET KIT, for 2no doors 626-926mm up to 2700mm high and 44mm thick. Inclusive of timber door linings, brush and silicon seals.	1067.00
P7401 ITD	PORTMAN INTERMEDIATE/TALL TELESCOPIC DOORSET KIT, for 2no doors 927-1300mm up to 2700mm high and 44mm thick. Inclusive of timber door linings, brush and silicon seals.	1308.00

Furniture



Leading edge G pull

Part code	W x H x D (mm)	SSS (£)	PSS* (£)	SNP (£)	PNP* (£)	SBL (£)	PBL* (£)	ABR (£)	OBZ (£)	IBU (£)	DBZ (£)	NST (white)
PH7044	44.5 x 100 x 53	89.00	105.00	101.85	113.40	111.00	113.40	114.00	114.00	114.00	114.00	92.00

Pop-Out Pull

Part code	W x H x D (mm)	SSS (£)	PSS* (£)	SNP (£)	PNP* (£)	SBL (£)	PBL* (£)	ABR (£)	OBZ (£)	IBU (£)	DBZ (£)	NST (white)
PH7045 (Button & Pull silver)	20 x 220 x 75	48.00	68.25	66.00	73.50	71.00	74.00	73.00	73.00	73.00	73.00	70.35

PH flush pulls - Pricing is PR. Sold as PR (inclusive of edge edge pull)

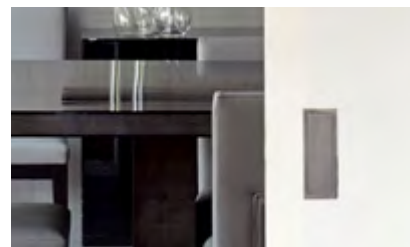
Part code	W x H x D (mm)	SSS (£)	PSS* (£)	SNP (£)	PNP* (£)	SBL (£)	PBL* (£)	ABR (£)	OBZ (£)	IBU (£)	DBZ (£)	NST (white)
PH5080 round flush pull	80ø x 17	68.00	77.00	76.00	88.00	76.00	88.00	92.00	92.00	92.00	92.00	68.00
PH5080B bathroom lock set	80ø x 17	82.00	94.00	90.00	102.00	90.00	102.00	101.00	101.00	101.00	101.00	82.00
PH7150 rectangular flush pull	60 x 150 x 17	80.00	97.00	95.00	105.00	95.00	105.00	98.00	98.00	97.65	98.00	82.00
PH7300 rectangular flush pull	60 x 300 x 17	91.00	109.00	104.00	118.00	113.00	118.00	117.00	117.00	116.55	117.00	91.00
PH7600 rectangular flush pull	60 x 600 x 17	122.00	145.00	139.65	157.50	153.00	157.50	157.00	157.00	157.00	157.00	122.00
PH7150B bathroom lock set	60 x 150 x 17	149.00	174.00	159.00	193.00	159.00	197.00	196.00	196.00	196.00	196.00	152.00
PH7300B bathroom lock set	60 x 300 x 17	157.00	185.00	169.05	209.00	170.00	209.00	208.00	207.90	207.90	208.00	159.60
PH7600B bathroom lock set	60 x 600 x 17	196.00	233.10	210.00	259.35	210.00	260.00	259.00	259.00	259.00	259.00	200.00

* Options have Polished faceplate only.

Intumescent packs

Part code	£
IP250 - 250mm ² intumescent sheet	9.00
IP7150 - To suit PH7150	8.00
IP7300 - To suit PH7300	8.00
IP7600 - To suit PH7600	8.00
O11-018 - Ackrobond M60 Adhesive	16.00
IP5080 - To suit PH5080	7.00
IP5080B - To suit PH5080B	8.00
IP7045 - To suit PH7045	9.00
IP7150B - To suit PH7150B	8.00
IP7300B - To suit PH7300B	8.00
IP7600B - To suit PH7600B	8.00
IP750-097 - To suit 750-097	3.00

Sliding door gear



Portman sliding door gear - Timber/Framed door leaves

Part code	Description	£
PT718-WHI	1.8m long track, white painted	48.00
PT720-WHI	2m long track, white painted	53.00
PT730-WHI	3m long track, white painted	73.00
PT740-WHI	4m long track, white painted	POA
P701	Track side mount brackets	18.00

Silver anodised aluminium also available - please contact sales office.

Hanging gear - Timber/Framed and Glass door leaves

Part code	Description	£
P700S	Portman standard sliding door gear to suit individual timber/framed door leaves	65.00
P700F	Portman Flush bracket sliding door gear	117.00
PG926	Portman frameless glass door running gear to suit door panel up to 926mm wide	185.00
PG1500	Portman frameless glass door running gear to suit door panel up to 1500mm wide	213.00

Simultaneous and Telescopic (top mounted track only) kits

Part code	Description	£
P755	Simultaneous kit for double doors, each door leaf up to 926mm wide*	104.00
P757	Simultaneous kit for double doors, each door leaf up to 1300mm wide*	108.00
P756	Portman telescopic kit. Suits individual door leaves 626-1300mm wide	202.00

* Requires 2no P700S and a suitable length of track. For use with Portman PT tracks only.

Ancillaries & touch latch

Part code	Description	£
S1702 WT	1000mm white silicon seal to suit single Portman timber jamb set	2.70
701-028	2100mm length Portman 13mm "soft" brush seal in carrier, black	14.00
P5700	Wall reinforcing kit. 4 x 3m long C shaped sections (cut to length on site)	74.00
701-026	Plastic door bottom U channel 926mm long	4.00
701-027	Plastic door bottom U channel 1500mm long	6.00
701-205	Plastic door bottom U channel 2000mm long	8.00
701-099	Door bottom roller guide (to be used with 701-101)	34.00
701-101	5m anodised aluminium floor channel	78.00
701-324	Floor guide cast Stainless Steel	9.00
701-513	Top Door Bracket	7.70
701-603	Trolley Assembly	7.00
701-762	Spare Kit - Track Door Stop Assembly (Trolley Catch)	17.00
701-586	Portman Spanner 13 and 17mm open ended	7.00
701-634	Spanner for Large Head Gap Flush Bolt	2.00
P7598	Touch latch - 25mm throw	71.00

Heavy duty sliding gear

Part code	Description	£
K0830 2	3m 0830 Track Silver anodised (175kg)	147.00
K0830 3	Set 2no EA Running gear, Door Hangers, End stops. 1no Guide (175kg)	86.00
K0850 2	3m 0850 Track Silver anodised (250kg)	179.00
K0850 3	Set 2no EA Running gear, Door Hangers, End stops. 1no Guide (250kg)	101.00
K0850 5	Side mount for 0830 and 0850 (250kg)	7.00

TRICKS



Tricks Concealed Sliding Systems

Part code	Description	£
PS90X245	TRICKS CONCEALED SLIDING SYSTEM Kit for door leaf of maximum size of 2450mm high x 900mm wide x 40mm thick and up to 50kg. (To suit up to a 2390mm high x 682mm wide opening).	324.00
PS120X245	TRICKS CONCEALED SLIDING SYSTEM Kit for door leaf of maximum size of 2450mm high x 1200mm wide x 40mm thick and up to 50kg. (To suit up to a 2390mm high x 1002mm wide opening).	351.00

Please note: In addition to the kits themselves Portman also offer a lightweight 44mm thick solid core door leaf, which we can supply cut to size and pre-machine to suit the kit's morticing/mounting requirements (machining details for the door leaf can also be found below). In our experience the door-and-kit solution works best for most sites as the morticing details are relatively challenging. For more information please contact the sales office on sales@portman-pocketdoors.co.uk

Terms & conditions

1. THESE TERMS

- 1.1 Who is covered by these terms and conditions. These terms and conditions apply to you if you purchase goods from us as a consumer. If you are purchasing goods from us as a business please refer to our terms of business applicable to business customers.
- 1.2 What these terms cover. These are the terms and conditions on which we supply goods to you.
- 1.3 Why you should read them. Please read these terms carefully before you submit your order to us.

These terms tell you who we are, how we will provide goods to you, how you and we may change end the contract, what to do if there is a problem and other important information. If you think that there is a mistake in these terms, please contact us to discuss.

2. INFORMATION ABOUT US AND HOW TO CONTACT US

- 2.1 Who we are. www.portman-pocketdoors.co.uk is a trading website for Royde & Tucker Limited, a company registered in England and Wales. Our company registration number is 00531276 and our registered office is at Unit 6 Bilton Road, Cadwell Lane, Hitchin, Hertfordshire, SG4 0SB.
- 2.2 How to contact us. You can contact us by telephoning our customer service team on 01462 444466 or by writing to us at sales@portman-pocketdoors.co.uk and Royde & Tucker Ltd, Bilton Road, Cadwell Lane, Hitchin, SG4 0SB.
- 2.3 How we may contact you. If we have to contact you we will do so by telephone or by writing to you at the email address or postal address you provided to us when you place your order.
- 2.4 "Writing" includes emails. When we use the words "writing" or "written" in these terms, this includes emails.

3. OUR CONTRACT WITH YOU

- 3.1 How we will accept your order. Our acceptance of your order will take place when you receive an order confirmation from the website (order acceptance), at which point a contract will come into existence between you and us.
- 3.2 If we cannot accept your order. If we are unable to accept your order, we will inform you of this and will not charge you for the goods. This might be because the goods are out of stock, because of unexpected limits on our resources which we could not reasonably plan for, because we have identified an error in the price or description of the goods or because we are unable to meet a delivery deadline you have specified.
- 3.3 Your order number. We will assign an order number to your order and tell you what it is when we accept your order. It will help us if you can tell us the order number whenever you contact us about your order.

4. OUR GOODS

- 4.1 Goods may vary slightly from their pictures. The images of the goods on our website, catalogues and in our sales material are for illustrative purposes only. Although we have made every effort to display the colours and finish accurately, we cannot guarantee that the images displayed on our website or in our catalogues and sales material accurately reflect the colour or finish of the goods. Your goods may vary slightly from those images. We may also make variations to the appearance of our goods to incorporate improvements or allow for manufacturing alterations and we are therefore unable to guarantee that the goods will be identical to those displayed on our website or in our catalogues and sales material. Although we have made every effort to be as accurate as possible, all sizes, weights, capacities, dimensions and measurements indicated on our website or in our catalogues and sales material include a margin of tolerance.
- 4.2 Packaging of goods may vary. The packaging of the goods may vary from that shown in images on our website.
- 4.3 Making sure your measurements are accurate. If we are supplying the goods to measurements you have given us are responsible for ensuring that these measurements are correct.

5. YOUR RIGHTS TO MAKE CHANGES

If you wish to make a change to the goods you have ordered please contact us. We will let you know if the change is possible. If it is possible we will let you know about any changes to the price of the goods, the timing of supply or anything else which would be necessary as a result of your requested change and ask you to confirm whether you wish to go ahead with the change. If we cannot make the change or the consequences of making the change are unacceptable to you, you may want to end the contract (see clause 8 - Your rights to end the contract).

6. OUR RIGHTS TO MAKE CHANGES

- 6.1 Minor changes to the goods. We may change the goods:
 - (a) to reflect changes in relevant laws and regulatory requirements; and
 - (b) to implement minor technical adjustments and improvements, for example to address a safety issue. These changes will not affect your use of the goods.

7. PROVIDING THE GOODS

- 7.1 Delivery costs. The costs of delivery will be as advised in the order confirmation you receive from us in our email acceptance to you.
- 7.2 When and how we will provide the goods. During the order process we will let you know when we will provide the goods to you. We will deliver the goods to you as soon as possible, usually within a few days, in any event within 30 days after the day on which we accept your order. Delivery periods vary and depend on how long it takes to obtain and/or produce the relevant goods. However, our standard practice is to arrange delivery via a nominated delivery carrier who will provide a kerbside delivery service only. It is our responsibility to ensure that suitable personnel and/or resources are located at the delivery location to take delivery of the relevant goods.
- 7.3 We are not responsible for delays outside our control. If our supply of the goods are delayed by an event outside our control then we will contact you as soon as possible to let you know and we will take steps to minimise

the effect of the delay. Provided we do this we will not be liable for delays caused by the event, but if there is a risk of substantial delay you may contact us to end the contract and receive a refund for any goods you have paid for but not received.

- 7.4 If you are not at home when the goods are delivered. If no one is available at your address to take delivery and the goods cannot be posted through your letterbox, our delivery carrier will leave you a note informing you and will try to redeliver on another day (up to a maximum of 3 times).
- 7.5 If, despite our reasonable efforts, we are unable to contact you or re-arrange delivery we may end the contract and clause 10.2 will apply.
- 7.6 When you become responsible for the goods. The goods will be your responsibility from the time we deliver the goods to the address you gave us or you collect it from us.
- 7.7 When you own goods. You own the goods once we have received payment in full.
- 7.8 What will happen if you do not give required information to us. We may need certain information from you so that we can supply the goods to you, such as the required measurements for the goods. If so, this will have been stated in the description of the goods on our website, our catalogue or sales material. We will contact you to ask for this information if you have not provided it during the sales process. If you do not give us this information within a reasonable time of us asking for it, or if you give us incomplete or incorrect information, we may either end the contract (and clause 10.2 will apply) or make an additional charge of a reasonable sum to compensate us for any extra work that is required as a result. We will not be responsible for supplying the goods late or not supplying any part of them if this is caused by you not giving us the information we need within a reasonable time of us asking for it.
- 7.9 We may suspend supply of the goods if you do not pay. If we are supplying the goods in stages and you do not pay us for the goods when you are supposed to (see clause 12.4) and you still do not make payment within 5 days of us reminding you that payment is due, we may suspend the supply of any undelivered goods until you have paid us the outstanding amounts. We will contact you to tell you we are suspending supply of the goods. We will not suspend the goods where you dispute the unpaid invoice (see clause 12.6). As well as suspending the goods we can also charge you interest on your overdue payments (see clause 12.5).

8. YOUR RIGHTS TO END THE CONTRACT

- 8.1 You can always end your contract with us. Your rights when you end the contract will depend on what you have bought, whether there is anything wrong with it, how we are performing and when you decide to end the contract:
 - (a) If what you have bought is faulty or misdescribed you may have a legal right to end the contract (or to get the goods repaired or replaced or to get some or all of your money back), see clause 11;
 - (b) If you want to end the contract because of something we have done or have told you we are going to do, see clause 8.2; and
 - (c) If you have just changed your mind about the goods, see clause 8.3. You may be able to get a refund if you are within the cooling-off period, but this may be subject to deductions and you will have to pay the costs of return of any goods.
- 8.2 Ending the contract because of something we have done or are going to do. If you are ending a contract for a reason set out at (a) to (e) below the contract will end immediately and we will refund you in full for any goods which have not been provided. The reasons are:
 - (a) we have told you about an upcoming change to the goods or these terms which you do not agree to;
 - (b) we have told you about an error in the price or description of the goods you have ordered and you do not wish to proceed;
 - (c) there is a risk that supply of the goods may be significantly delayed because of events outside our control;
 - (d) we have suspended supply of the goods for technical or safety reasons, or notify you we are going to suspend them for technical or safety reasons, in each case for a period of more than 4 weeks; or
 - (e) you have a legal right to end the contract because of something we have done wrong.
- 8.3 Exercising your right to change your mind (Consumer Contracts Regulations 2013). For most goods bought by email, fax or phone you have a legal right to change your mind within 14 days and receive a refund. These rights, under the Consumer Contracts Regulations 2013, are explained in more detail in these terms.
- 8.4 When you don't have the right to change your mind. You do not have a right to change your mind in respect of:
 - (a) any goods which we inform you during the sales process is outside our standard range and needs to be cut to measure or tailor made using a non-standard material or colour; and
 - (b) any goods which become mixed inseparably with other items after their delivery, for example, they have been fitted with other parts
- 8.5 How long do I have to change my mind? You have 14 days after the day you (or someone you nominate) receives the goods, unless your goods are split into several deliveries over different days. In this case you have until 14 days after the day you (or someone you nominate) receives the last delivery to change your mind about the goods.

9. HOW TO END THE CONTRACT WITH US (INCLUDING IF YOU HAVE CHANGED YOUR MIND)

- 9.1 Tell us you want to end the contract. To end the contract with us, please let us know by doing one of the following:
 - (a) Email customer services at sales@portman-pocketdoors.co.uk. Please provide your name, home address, details of the order and, where available, your phone number and email address.
 - (b) By post. Simply write to us at the below address, including details of what you bought, when you ordered or received it and your name and address.
- 9.2 Returning goods after ending the contract. If you end the contract for any

Terms & conditions

reason after goods have been dispatched to you or you have received them, you must return them to us. You must send the goods back to us at Royde & Tucker Ltd, Bilton Road, Cadwell Lane, Hitchin, SG4 0SB. Please email us at sales@portman-pocketdoors.co.uk for a return label or to arrange collection. If you are exercising your right to change your mind you must send off the goods within 14 days of telling in writing you wish to end the contract.

- 9.3 When we will pay the costs of return. We will pay the costs of return:
- (a) if the goods are faulty or misdescribed; or
 - (b) if you are ending the contract because we have told you of an upcoming change to the goods or these terms, an error in pricing or description, a delay in delivery due to events outside our control or because you have a legal right to do so as a result of something we have done wrong. In all other circumstances (including where you are exercising your right to change your mind) you must pay the costs of return.
- 9.4 What we charge for collection. If you are responsible for the costs of return and we are collecting the goods from you, we will charge you the direct cost to us of collection.
- 9.5 How we will refund you. We will refund you the price you paid for the goods including delivery costs, by the method you used for payment. However, we may make deductions from the price, as described below.
- 9.6 Deductions from refunds if you are exercising your right to change your mind. If you are exercising your right to change your mind:
- (a) We may reduce your refund of the price (excluding delivery costs) to reflect any reduction in the value of the goods, if this has been caused by your damaging them or handling them in a way which would not be permitted in a shop. If we refund you the price paid before we are able to inspect the goods and later discover you have damaged or handled them in an unacceptable way, you must pay us an appropriate amount.
 - (b) The maximum refund for delivery costs will be the costs of delivery by the least expensive delivery method we offer. For example, if we offer delivery of the goods within 3-5 days at one cost but you choose to have the goods delivered within 24 hours at a higher cost, then we will only refund what you would have paid for the cheaper delivery option.
- 9.7 When your refund will be made. We will make any refunds due to you as soon as possible. If you are exercising your right to change your mind then:
- (a) If the goods are goods and we have not offered to collect them, your refund will be made within 14 days from the day on which we receive the goods back from you or, if earlier, the day on which you provide us with evidence that you have sent the goods back to us. For information about how to return the goods to us, see clause 9.8.
 - (b) In all other cases, your refund will be made within 14 days of your telling us you have changed your mind.

10. OUR RIGHTS TO END THE CONTRACT

- 10.1 We may end the contract if you break it. We may end the contract for the goods at any time by writing to you if:
- (a) you do not make any payment to us;
 - (b) you do not, within a reasonable time of us asking for it, provide us with information that is necessary for us to provide the goods, for example, measurements for the goods; or
 - (c) you do not, within a reasonable time, allow us to deliver the goods to you or collect them from us.
- 10.2 You must compensate us if you break the contract. If we end the contract in the situations set out in clause 10.1 we will refund any money you have paid in advance for goods we have not provided but we may deduct or charge you reasonable compensation for the net costs we will incur as a result of your breaking the contract.

11. IF THERE IS A PROBLEM WITH THE GOODS

- 11.1 How to tell us about problems. If you have any questions or complaints about the goods, please contact us. You can telephone our customer service team at 01462 444466 or write to us at sales@portman-pocketdoors.co.uk and Royde & Tucker Ltd, Bilton Road, Cadwell Lane, Hitchin, SG4 0SB.
- 11.2 Summary of your legal rights. We are under a legal duty to supply goods that are in conformity with this contract. Nothing in these terms will affect your legal rights.
- 11.3 Your obligation to return rejected faulty goods. If you wish to exercise your legal rights to reject goods you must send them back to us or allow us to collect them from you. We will pay the costs of postage or collection. Please email us at sales@portman-pocketdoors.co.uk for a return label or to arrange collection.

12. PRICE AND PAYMENT

- 12.1 Where to find the price for the goods. The price of the goods (which includes VAT) will be the price advised to you by our sales team when you place your order (or, if no price is advised, the price set out in our published price list in force as at the date of your order) and will be confirmed to you in our order acceptance. We take all reasonable care to ensure that the price of the goods advised to you is correct. However please see clause 12.3 for what happens if we discover an error in the price of the goods you order.
- 12.2 We will pass on changes in the rate of VAT. If the rate of VAT changes between your order date and the date we supply the goods, we will adjust the rate of VAT that you pay, unless you have already paid for the goods in full before the change in the rate of VAT takes effect.
- 12.3 What happens if we got the price wrong. It is always possible that, despite our best efforts, some of the goods we sell may be incorrectly priced. We will normally check prices before accepting your order so that, where the good's correct price at your order date is less than our stated price at your order date, we will charge the lower amount. If the good's correct price at your order date is higher than the price stated to you, we will contact you for your instructions before we accept your order.
- 12.4 When you must pay and how you must pay. We accept payment by

MasterCard, Visa and Maestro credit and debit cards. You must pay for goods before we dispatch them.

- 12.5 What to do if you think an invoice is wrong. If you think an invoice is wrong please contact us promptly to let us know and we will not charge you interest until we have resolved the issue.

13. OUR RESPONSIBILITY FOR LOSS OR DAMAGE SUFFERED BY YOU

- 13.1 We are responsible to you for foreseeable loss and damage caused by us. If we fail to comply with these terms, we are responsible for loss or damage you suffer that is a foreseeable result of our breaking this contract or our failing to use reasonable care and skill, but we are not responsible for any loss or damage that is not foreseeable. Loss or damage is foreseeable if either it is obvious that it will happen or if, at the time the contract was made, both we and you knew it might happen, for example, if you discussed it with us during the sales process.
- 13.2 We do not exclude or limit in any way our liability to you where it would be unlawful to do so. This includes liability for death or personal injury caused by our negligence or the negligence of our employees, agents or subcontractors; for fraud or fraudulent misrepresentation; for breach of your legal rights in relation to the goods including the right to receive goods which are: as described and match information we provided to you and any sample or model seen or examined by you; of satisfactory quality; fit for any particular purpose made known to us; supplied with reasonable skill and care and, where installed by us, correctly installed; and for defective goods under the Consumer Protection Act 1987.
- 13.3 We are not liable for business losses. We only supply the goods to you as a consumer for domestic and private use. If you use the goods for any commercial, business or re-sale purpose we will have no liability to you for any loss of profit, loss of business, business interruption, or loss of business opportunity.
- 13.4 If you are a consumer, any manufacturer's guarantee is in addition to, and does not affect, your legal rights in relation to Goods that are faulty or not as described. Advice about your legal rights is available from your local Citizens' Advice Bureau or Trading Standards office.

14. OUR WARRANTY FOR THE GOODS

We will at our option repair or replace the defective goods, or refund the price of the defective goods in full.

- 14.1 The warranty in clause does not apply to any defect in the relevant goods arising from:
- (a) incorrect installation of the goods (including installation which is not in accordance with any written or oral fitting instructions supplied with the relevant goods);
 - (b) fair wear and tear;
 - (c) wilful damage, abnormal storage or working conditions, accident, negligence by you or by any third party;
 - (d) any alteration or repair by you or by a third party without our written consents; or
 - (e) any specification provided by you.
- 14.2 This warranty is in addition to, and does not affect, your legal rights in relation to goods that are faulty or not as described. Advice about your legal rights is available from your local Citizens' Advice Bureau or Trading Standards office.

15. HOW WE MAY USE YOUR PERSONAL INFORMATION

- 15.1 How we will use your personal information. We will use the personal information you provide to us:
- (a) to supply the goods to you;
 - (b) to process your payment for the goods; and
 - (c) if you agreed to this during the order process, to give you information about similar goods that we provide, but you may stop receiving this at any time by contacting us.
- 15.2 We will only give your personal information to third parties where the law either requires or allows us to do so.

16. OTHER IMPORTANT TERMS

- 16.1 We may transfer this agreement to someone else. We may transfer our rights and obligations under these terms to another organisation.
- 16.2 You need our consent to transfer your rights to someone else. You may only transfer your rights or your obligations under these terms to another person if we agree to this in writing.
- 16.3 Nobody else has any rights under this contract. This contract is between you and us. No other person shall have any rights to enforce any of its terms. Neither of us will need to get the agreement of any other person in order to end the contract or make any changes to these terms.
- 16.4 If a court finds part of this contract illegal, the rest will continue in force. Each of the paragraphs of these terms operates separately. If any court or relevant authority decides that any of them are unlawful, the remaining paragraphs will remain in full force and effect.
- 16.5 Even if we delay in enforcing this contract, we can still enforce it later. If we do not insist immediately that you do anything you are required to do under these terms, or if we delay in taking steps against you in respect of your breaking this contract, that will not mean that you do not have to do those things and it will not prevent us taking steps against you at a later date. For example, if you miss a payment and we do not chase you but we continue to provide the goods, we can still require you to make the payment at a later date.
- 16.6 Which laws apply to this contract and where you may bring legal proceedings. These terms are governed by English law and you can bring legal proceedings in respect of the goods in the English courts. If you live in Scotland you can bring legal proceedings in respect of the goods in either the Scottish or the English courts. If you live in Northern Ireland you can bring legal proceedings in respect of the goods in either the Northern Irish or the English courts.



pocket door systems

Royde & Tucker Ltd

Bilton Road, Cadwell Lane

Hitchin SG4 0SB

Tel: 01462 444466

Email: sales@portman-pocketdoors.co.uk

www.portman-pocketdoors.co.uk