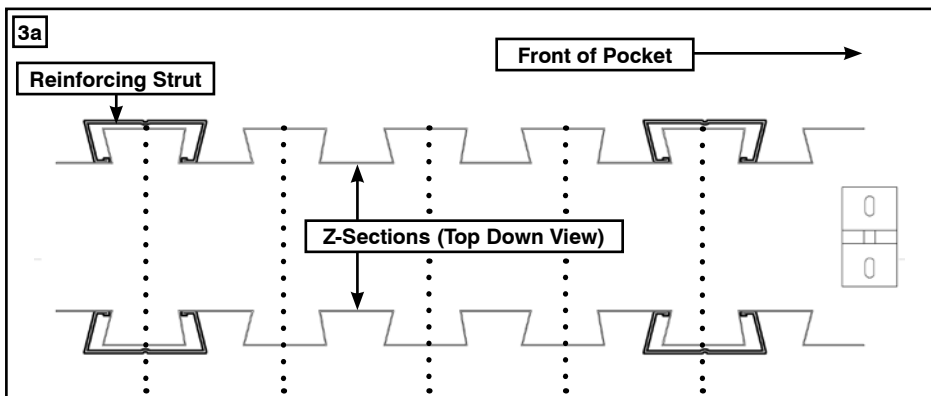
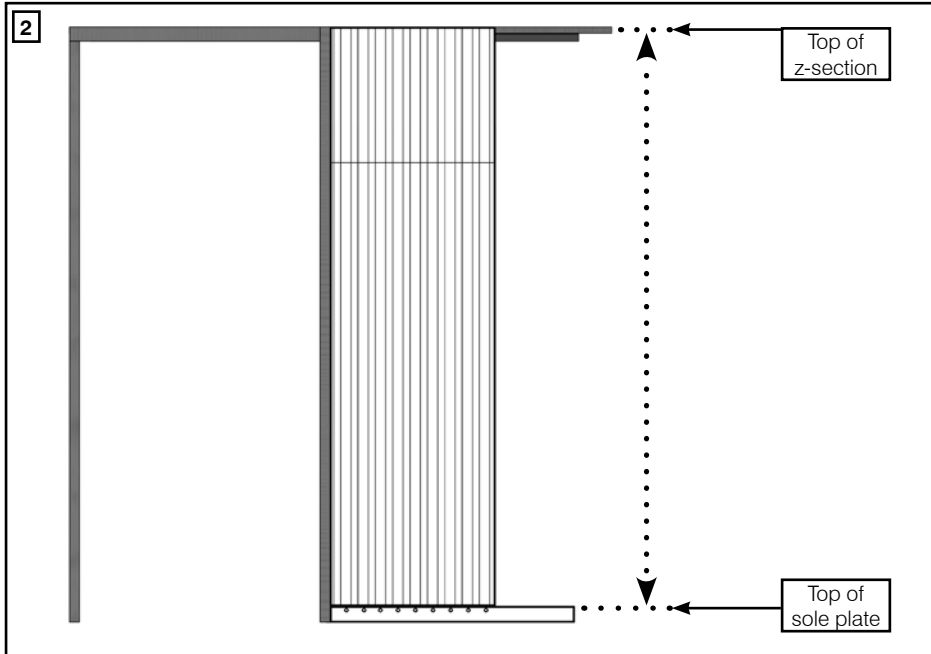


P5700

## Rigidity Upgrade Kit

# PORTMAN



1. Complete step 5 in the Portman Pocket door fitting instructions.
2. Measure from the top of the sole plate to the top of "Z" section sheet. Cut the 4 reinforcing struts to this size.
3. Pilot drill and fix struts to z-section profiles as shown. Position screws along entire length for secure fitting.
4. Continue with pocket door installation.

**Please note:**

**Screws to retain plasterboard to z-section must be fitted with equal spacing, max. 300mm apart vertically and horizontally equal. Mark plasterboard in line with where the z-section touches and pencil on vertical lines of full length (See Image 3a / 3b).**

**It is critical that the sheets are fully fixed to the track mount and sole plate.**

